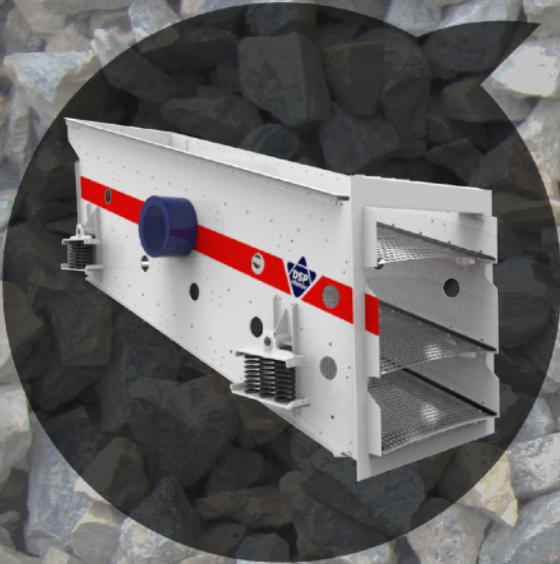


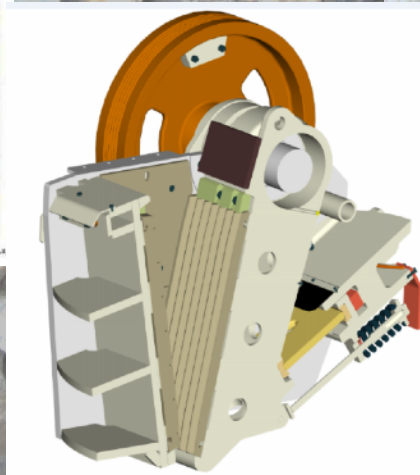
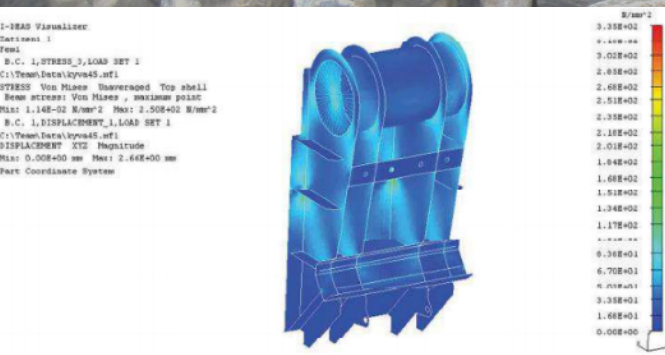
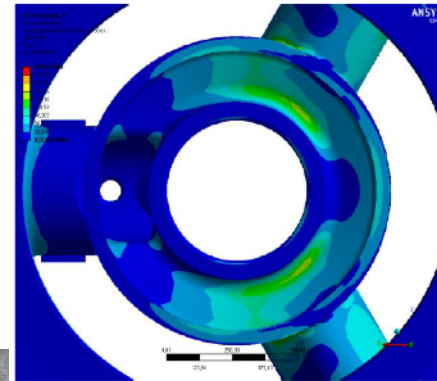
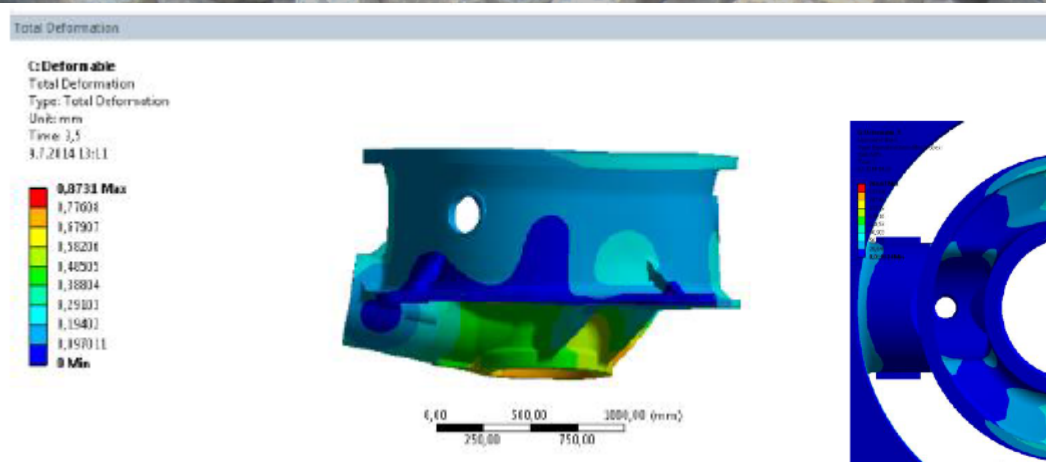


**machines and equipment
for rocky materials treatment**

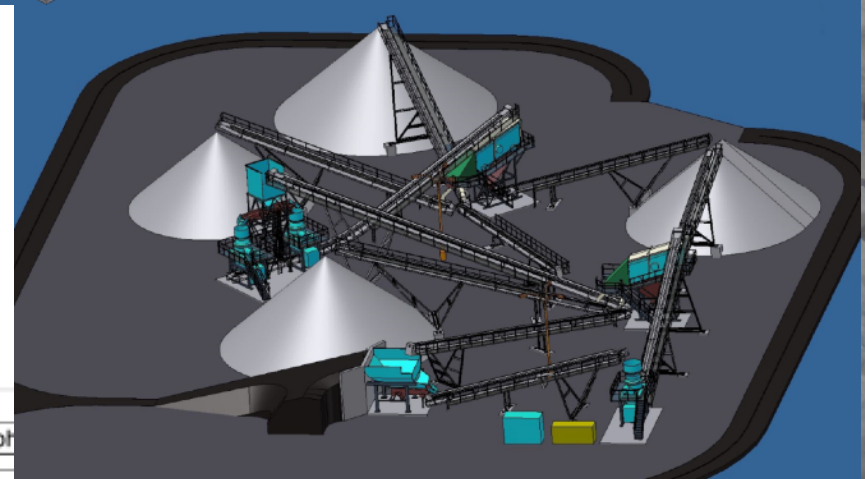
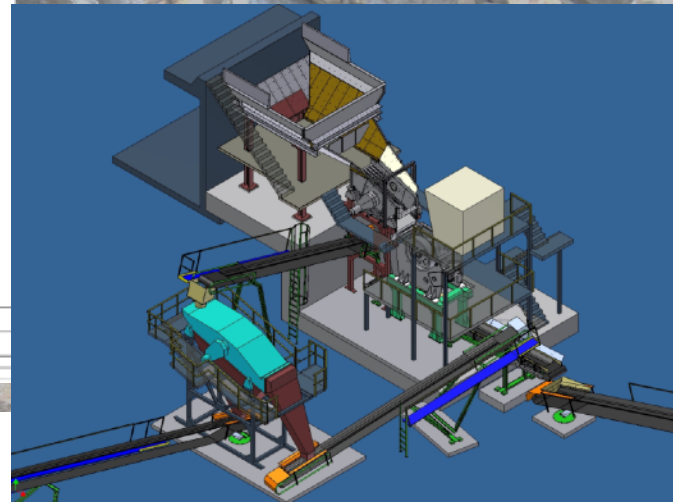
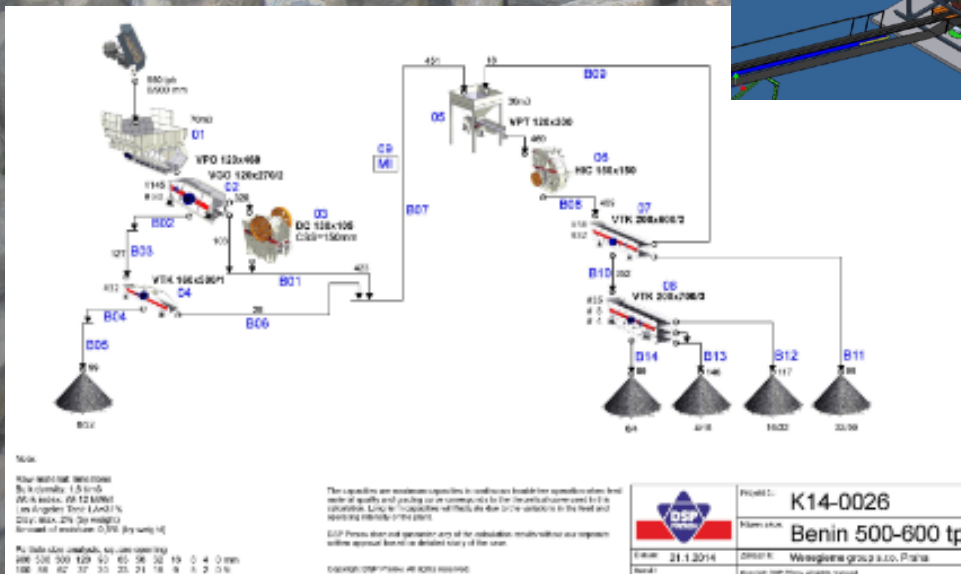
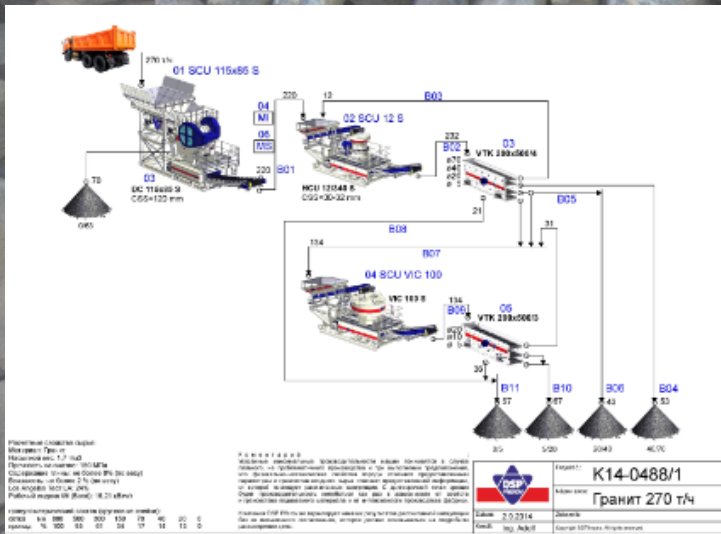
Various types of machines



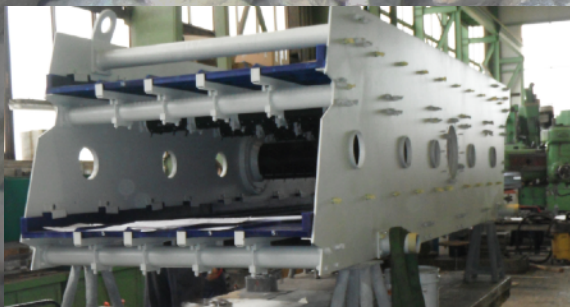
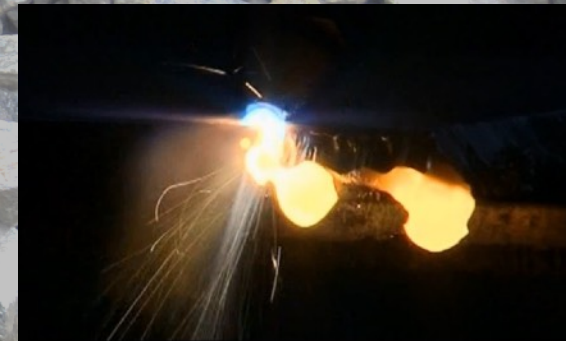
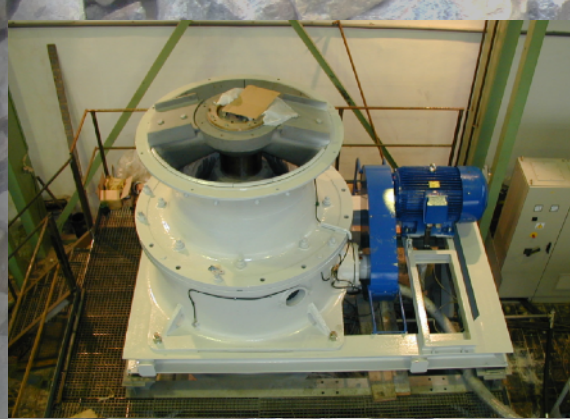
Design development



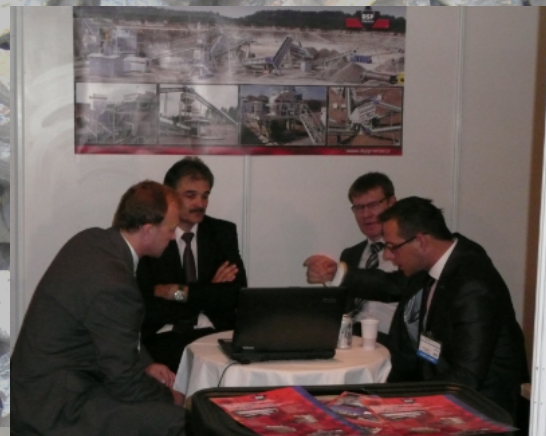
Projections of technological lines



Our own production



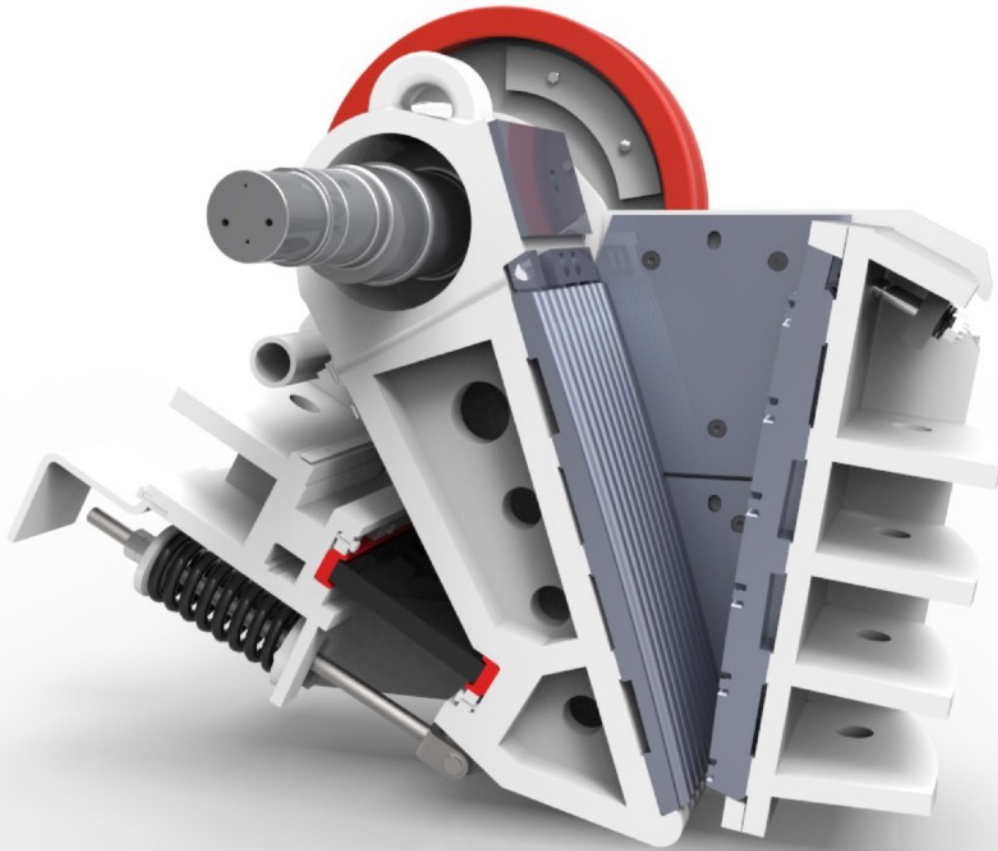
Complex business services



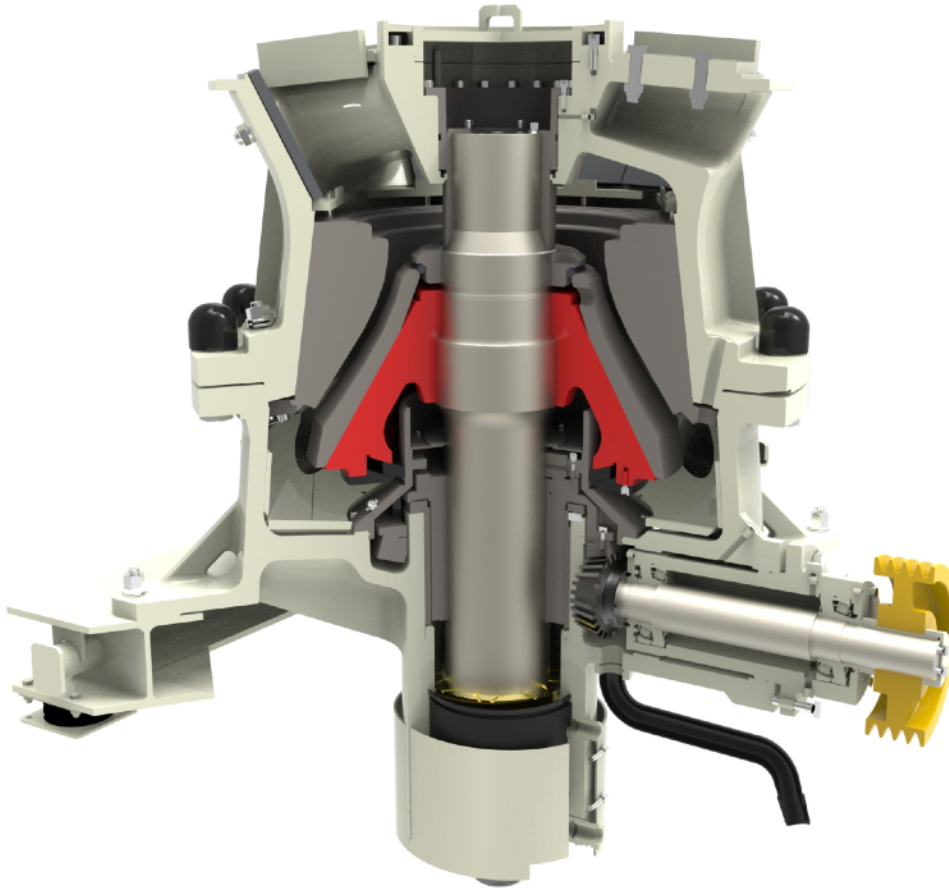
Professional service



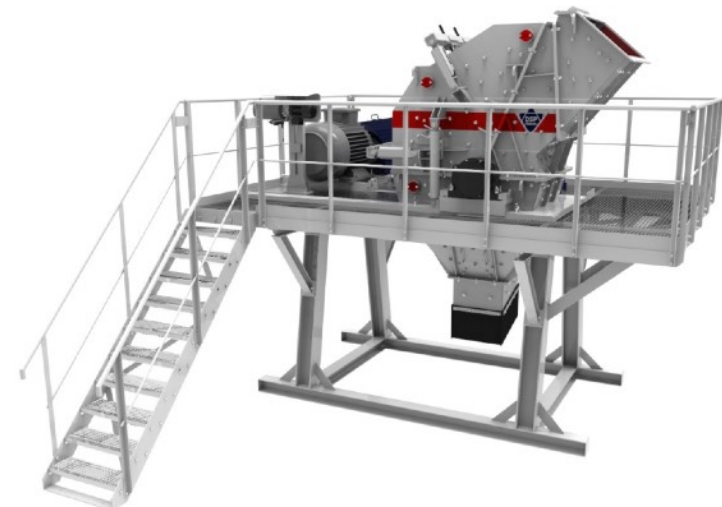
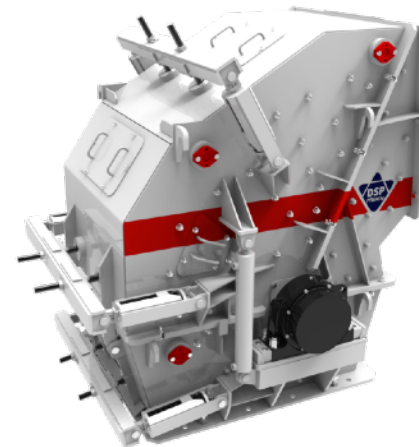
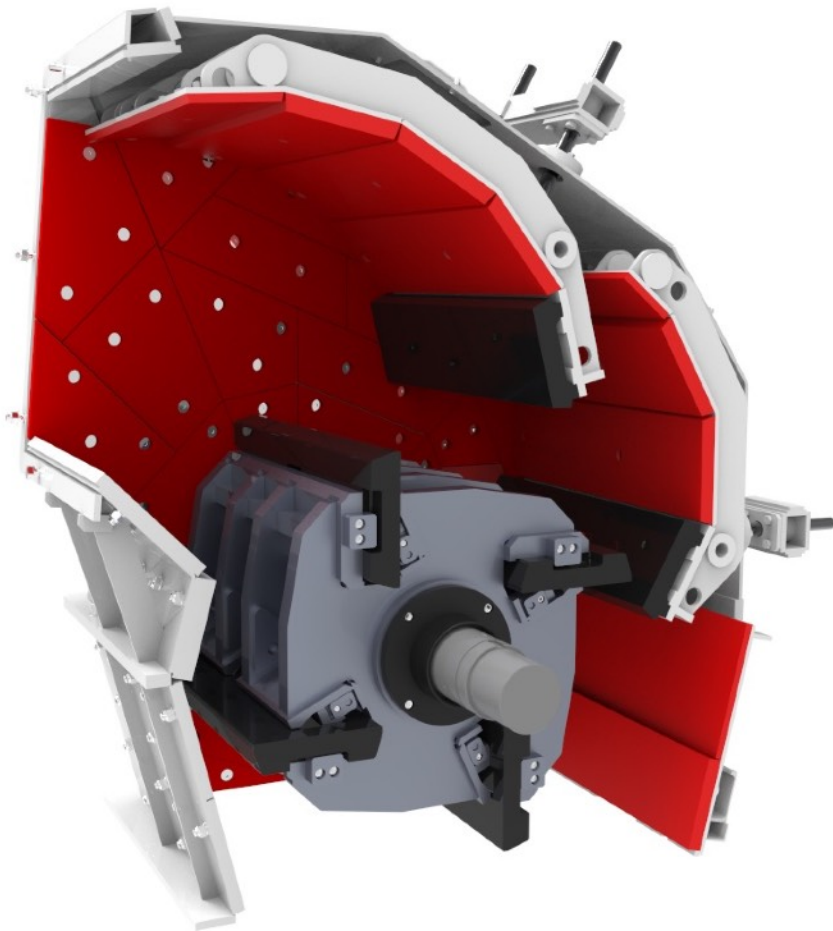
Jaw Crushers DC



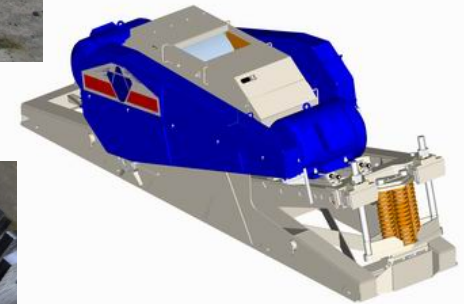
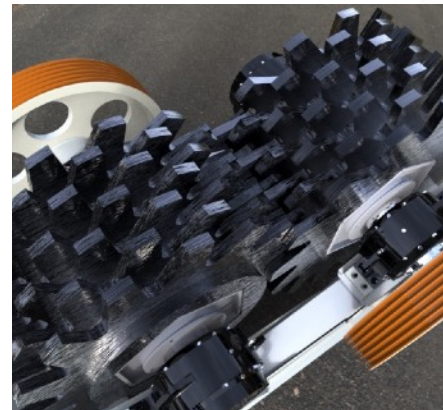
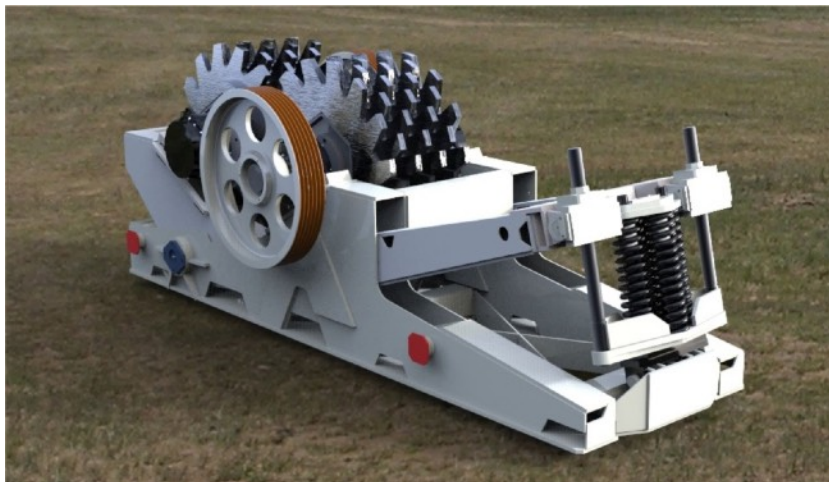
Cone Crushers HCU



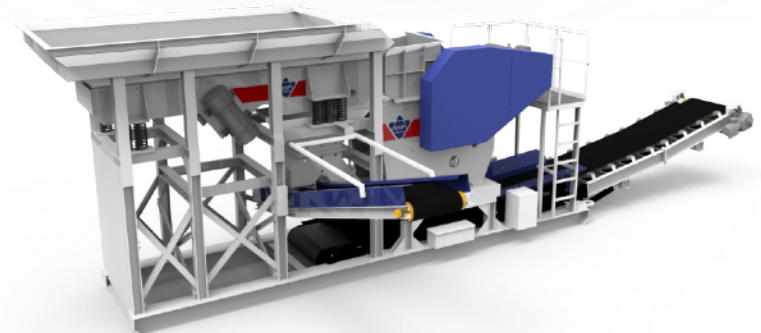
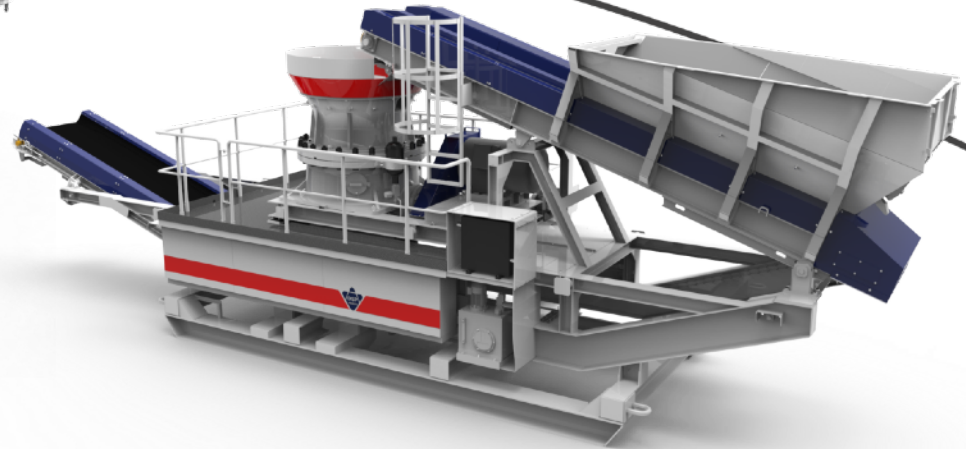
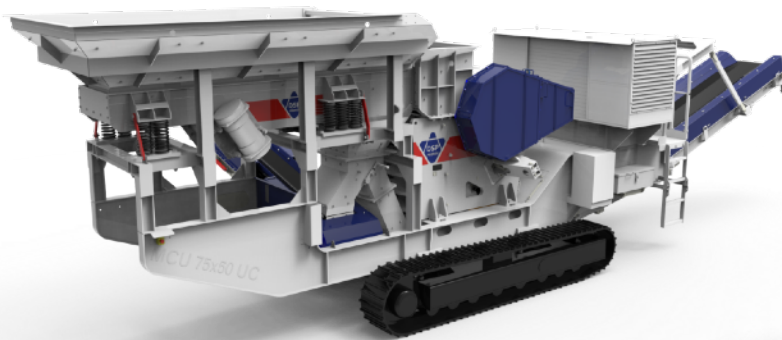
Impact Crushers HIC



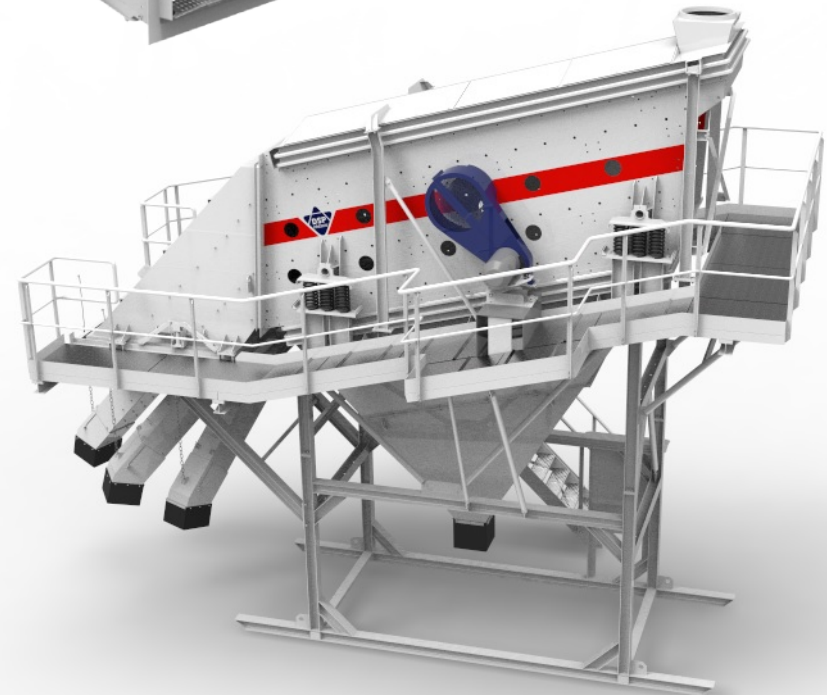
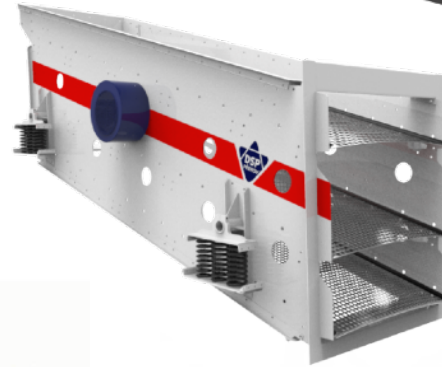
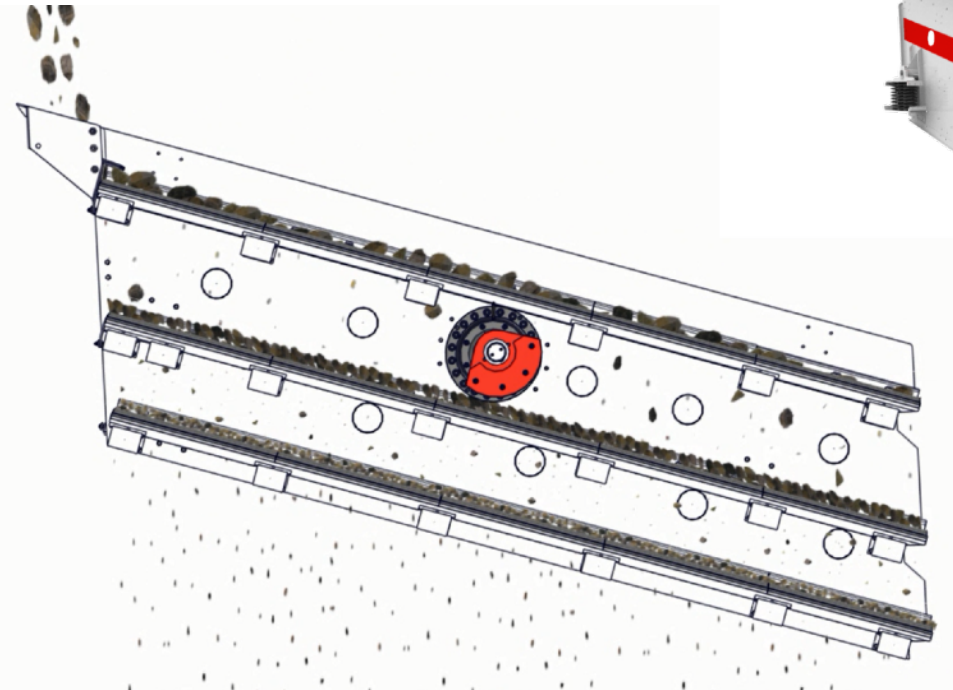
Roller Crushers RCT & RCS



Mobile & Portable Crushing Units



Vibrating Screens VTK






Limestone – 400 tph



Granite – 300 tph

A wide-angle photograph of a gravel processing plant. In the center, a large conveyor system with multiple white metal frames and inclined chutes is processing material. An orange truck is positioned at the base of the conveyor on the left. To the right, another conveyor system is visible, with a small white building nearby. The ground is a mix of dirt and gravel, with large piles of material in the background. A dirt road with tire tracks runs across the foreground. In the distance, a line of trees with autumn foliage is visible under a cloudy sky. A dark semi-transparent banner is at the bottom left.

Gravel – 250 tph



Dolomite – 235 tph



Gravel – 220 tph



Limestone – 120 tph



Laterite – 25 tph

DSP Přerov spol. s r. o.

Kojetínská 2900/51

750 02 Přerov I - Město

Czech Republic

www.dspprerov.cz

dsp@dspprerov.cz

