



# TITAN™ LP

## Swing Disc Valve

The United Conveyor Corporation (UCC) TITAN™ LP Swing Disc Valve is designed for low headroom, fly ash feed service in dilute-phase, positive pressure systems. Utilizing proven UCC swing-disc technology, this valve is a superior replacement to slide gates found in non-UCC systems. The TITAN LP Swing Disc Valve provides improved sealing performance, extended service life, greater reliability and ease of maintenance over slide gate valves. The valve is fully assembled and can be shipped pre-piped to reduce field assembly and installation costs.

### TITAN™ LP Field Installation



### FEATURES

- Inlet Size and Type: 8" 150 lb. ANSI drilling pattern
- Outlet Size and Type: Custom configuration to match non-UCC slide gate valves
- Maximum Operating Pressure: 1 bar
- Maximum Operating Temperature: 399°C
- Seat Force: 2335 N (*competitive valves: 1165 N*)
- Actuator Operating Pressure: 5.5 - 7 bar

### ADVANTAGES

- **Superior Performance**
  - › Provides twice the valve closing force compared to slide gate designs
  - › Self adjusting, spring-mounted ball pivot with machined flat disc provides reliable sealing performance
  - › Spring-loaded design maintains uniform pressure on the packing during operation, preventing leakage and extending the life of the shaft and packing
  - › Sharp edged seat cuts through material for proper sealing
- **Longer Service Life**
  - › DURITE® H (high-chrome) seat and disc provides superior wear resistance
  - › Single through-bolt disc with ball pivot assures proper alignment and sealing
- **Simple and Easy Maintenance**
  - › Access plate allows adjustments and maintenance to be performed in place
  - › Greased sleeve bearings are easily replaceable

### Metal-to-Metal Seating



# TITAN™ LP

## Swing Disc Valve

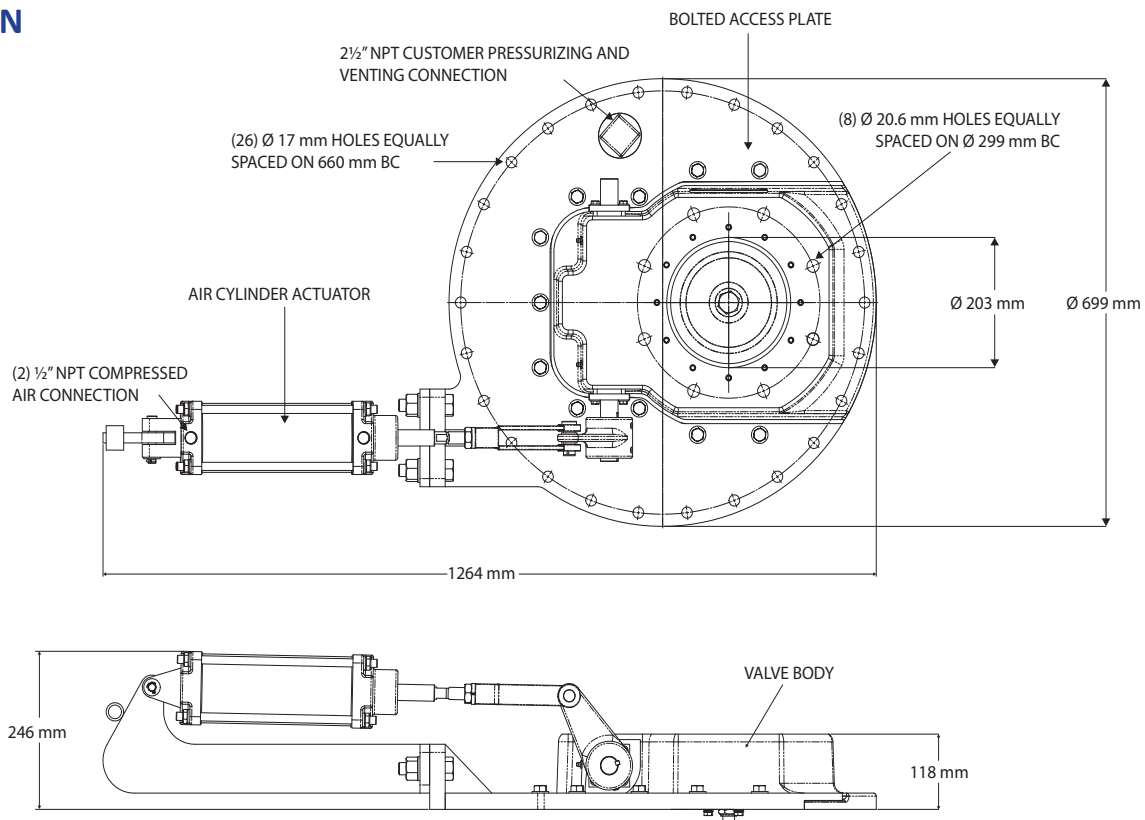
Technical Data Sheet  
TDS12-409

### ADVANTAGES (cont.)

#### ■ Optional Components

- › Actuator guard for personnel protection
- › Roller lever limit switches with pre-drilled brackets for easy installation. Proximity switches available upon request
- › Solenoid valve options: Pre-piped solenoid using brass fittings and rubber hoses

### DESIGN



### ORDERING INFORMATION

Please reference UCC Drawing # 5-1908-650 for current product information.

**UNITED CONVEYOR CORPORATION**

USA • GERMANY • INDIA • THAILAND • CHINA

contactucc@unitedconveyor.com

[www.unitedconveyor.com](http://www.unitedconveyor.com)